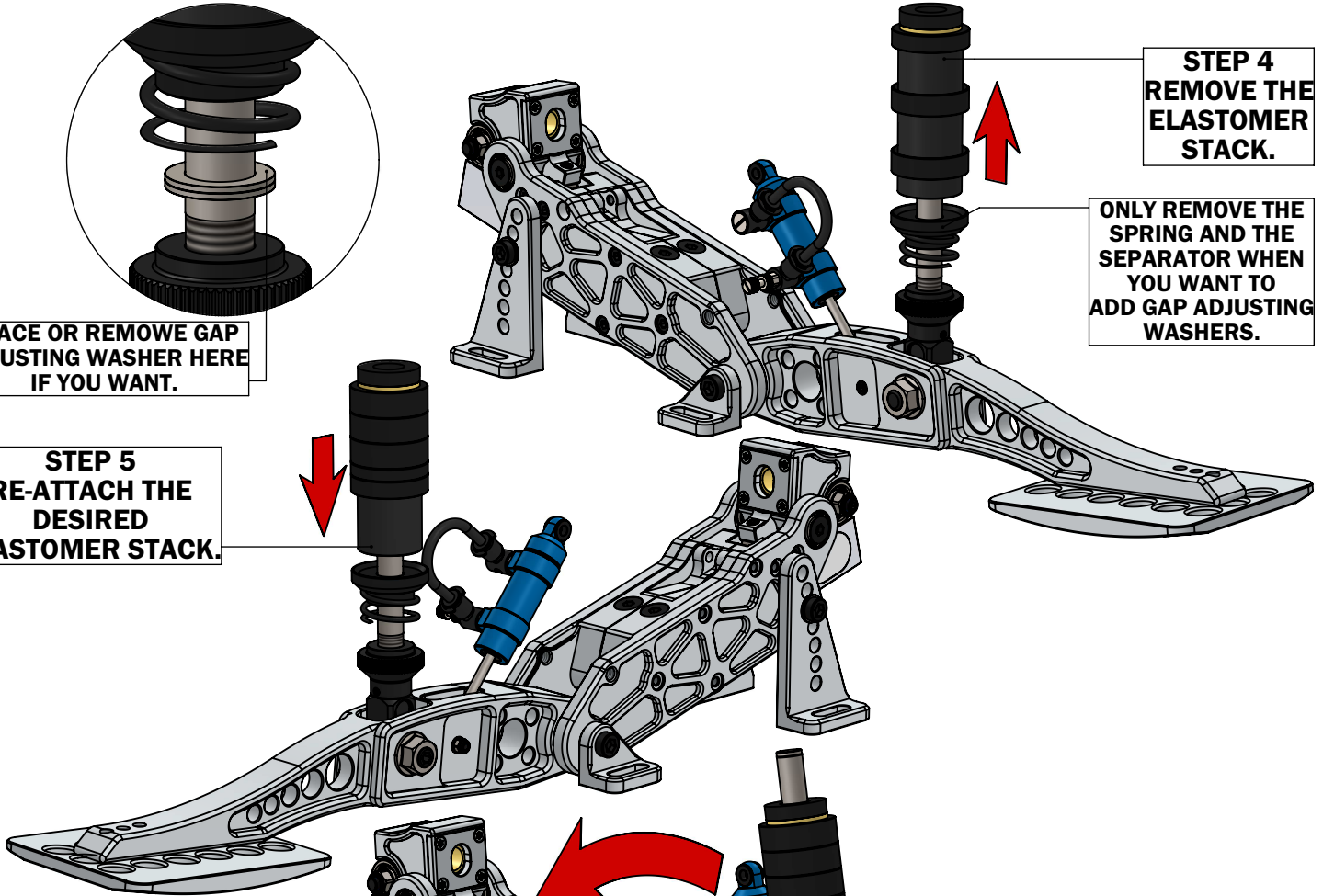


PLACE OR REMOVE GAP ADJUSTING WASHER HERE IF YOU WANT.

**STEP 5**  
RE-ATTACH THE DESIRED ELASTOMER STACK.

**STEP 4**  
REMOVE THE ELASTOMER STACK.

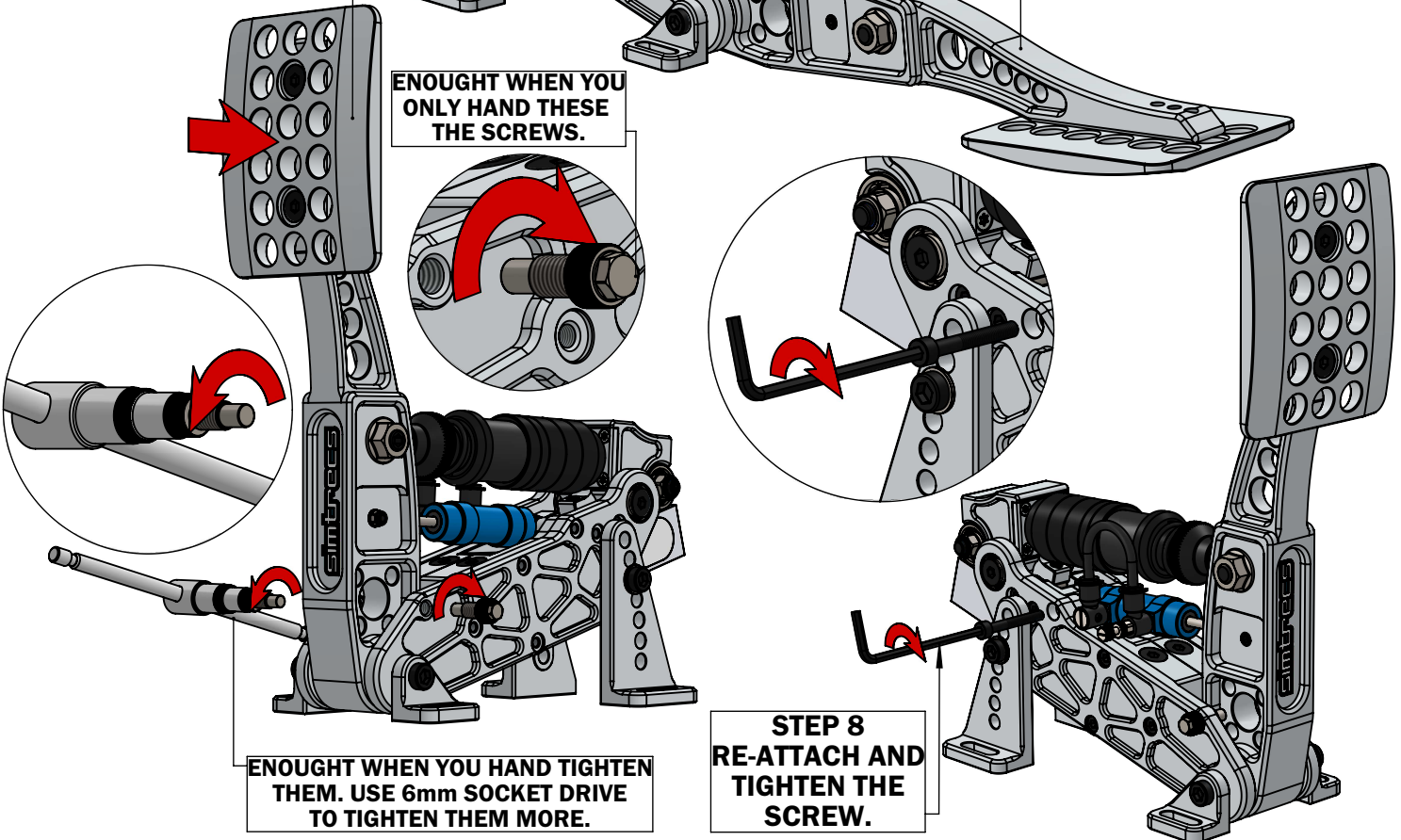
ONLY REMOVE THE SPRING AND THE SEPARATOR WHEN YOU WANT TO ADD GAP ADJUSTING WASHERS.



**STEP 7**  
ADD TWO SCREWS WHILE PRESSING THE PEDAL A LITTLE BIT BACKWARDS.

**STEP 6**  
FOLD BACK THE PEDAL ARM TO THIS POSITION.

ENOUGH WHEN YOU ONLY HAND THESE THE SCREWS.



ENOUGH WHEN YOU HAND TIGHTEN THEM. USE 6mm SOCKET DRIVE TO TIGHTEN THEM MORE.

**STEP 8**  
RE-ATTACH AND TIGHTEN THE SCREW.