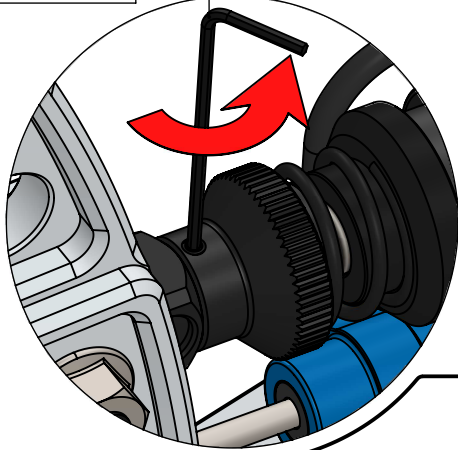
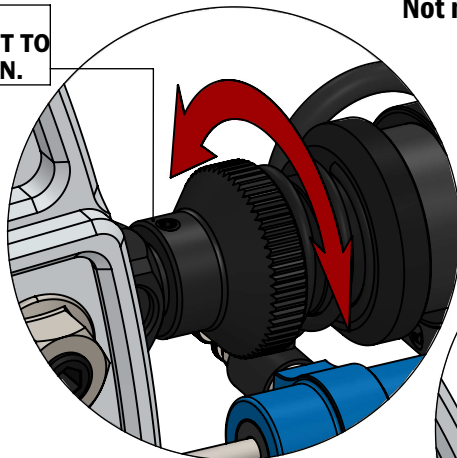


**STEP 1**  
LOOSEN THE  
SCREW.

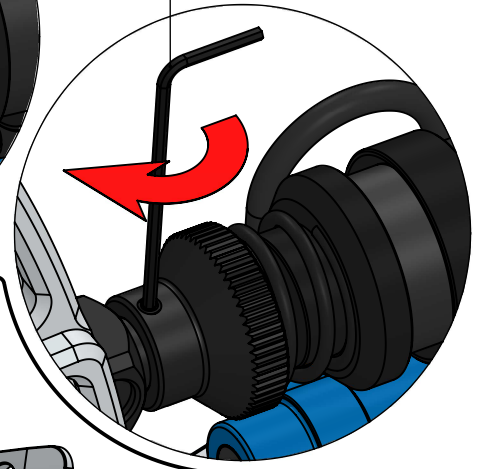


**STEP 2**  
TURN THE ADJUSTER NUT TO  
THE DESIRED POSITION.



Not necessary to use the securing screw.  
Use 1.5mm hex wrench  
for this step.

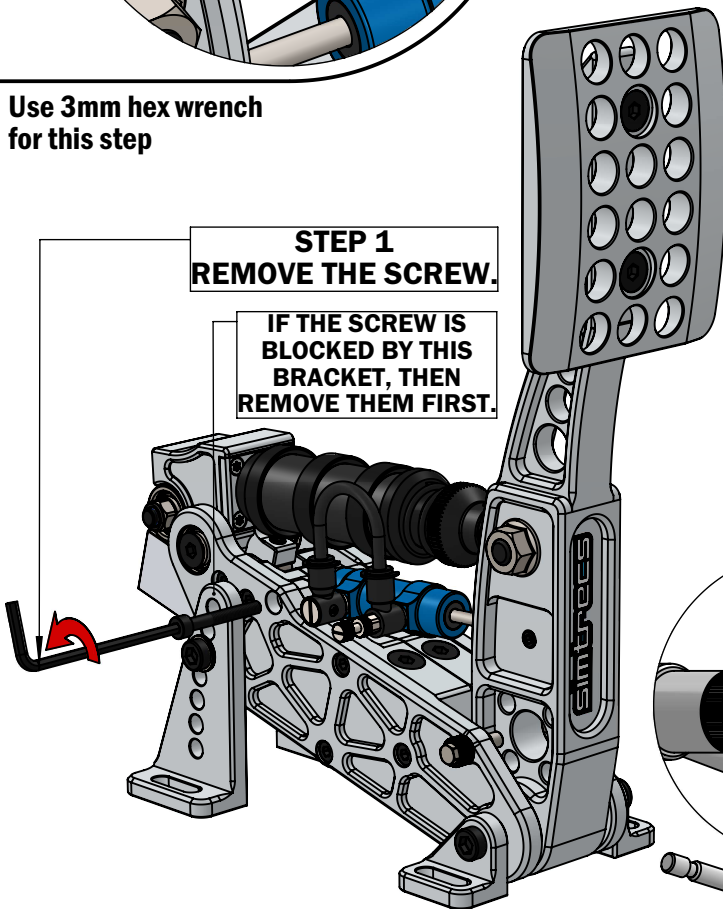
**STEP 3**  
GENTLY TIGHTEN  
THE SCREW.



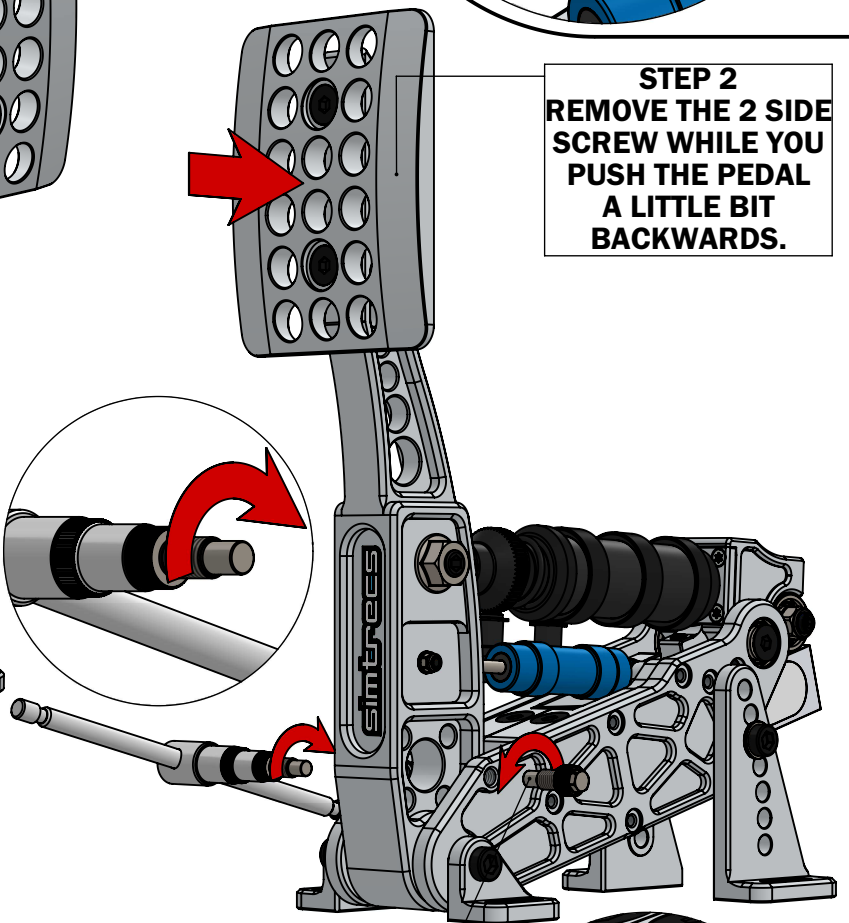
Use 3mm hex wrench  
for this step

**STEP 1**  
REMOVE THE SCREW.

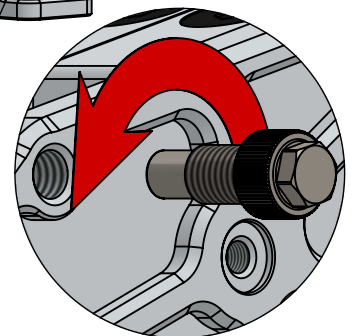
IF THE SCREW IS  
BLOCKED BY THIS  
BRACKET, THEN  
REMOVE THEM FIRST.



**STEP 2**  
REMOVE THE 2 SIDE  
SCREW WHILE YOU  
PUSH THE PEDAL  
A LITTLE BIT  
BACKWARDS.



USE 6mm SOCKET DRIVE TO  
OPEN THESE SCREWS IF  
THEY ARE TO TIGHT.



**STEP 3**  
TILT FORWARD THE PEDAL ARM.

