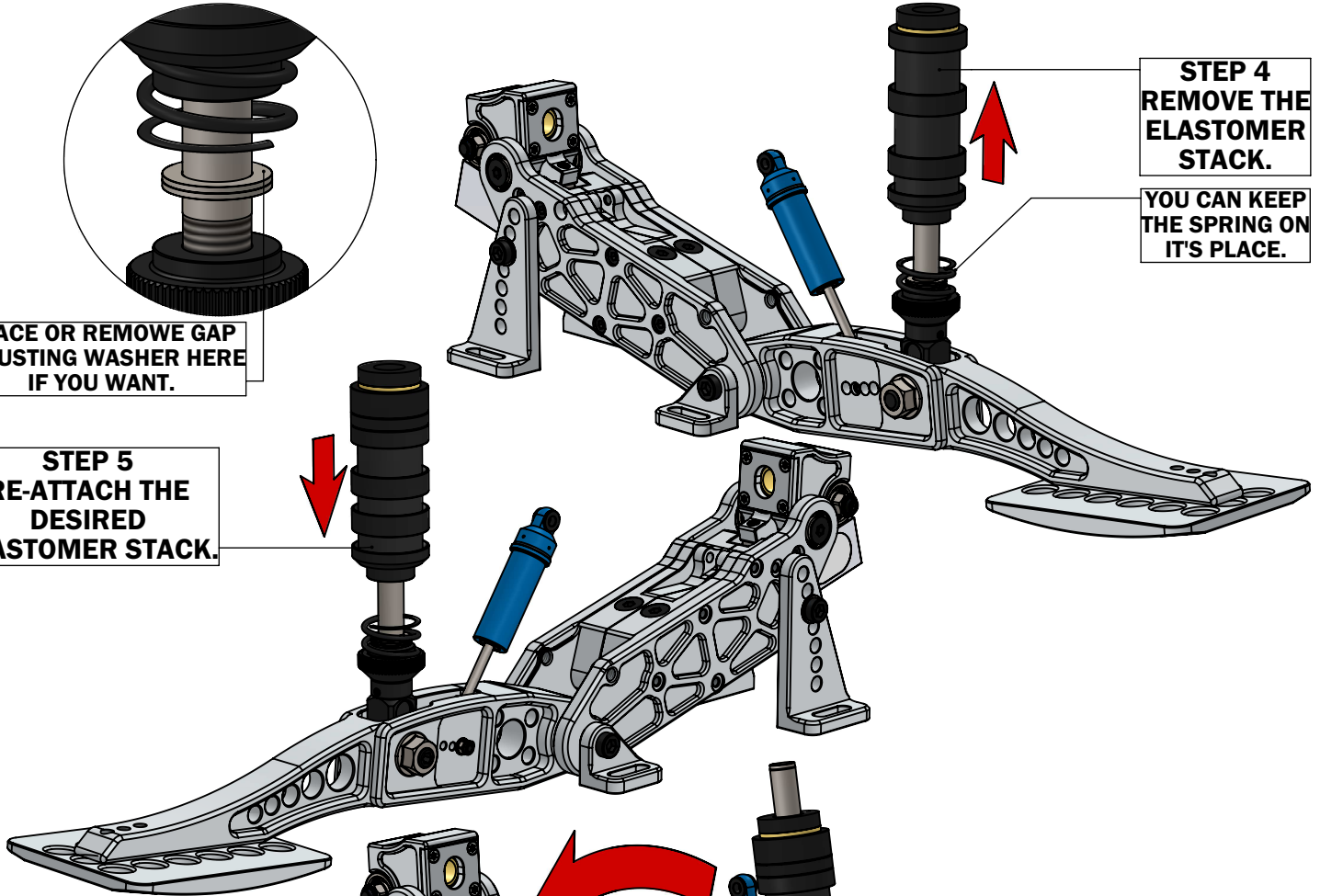


PLACE OR REMOVE GAP ADJUSTING WASHER HERE IF YOU WANT.

STEP 5
RE-ATTACH THE DESIRED ELASTOMER STACK.

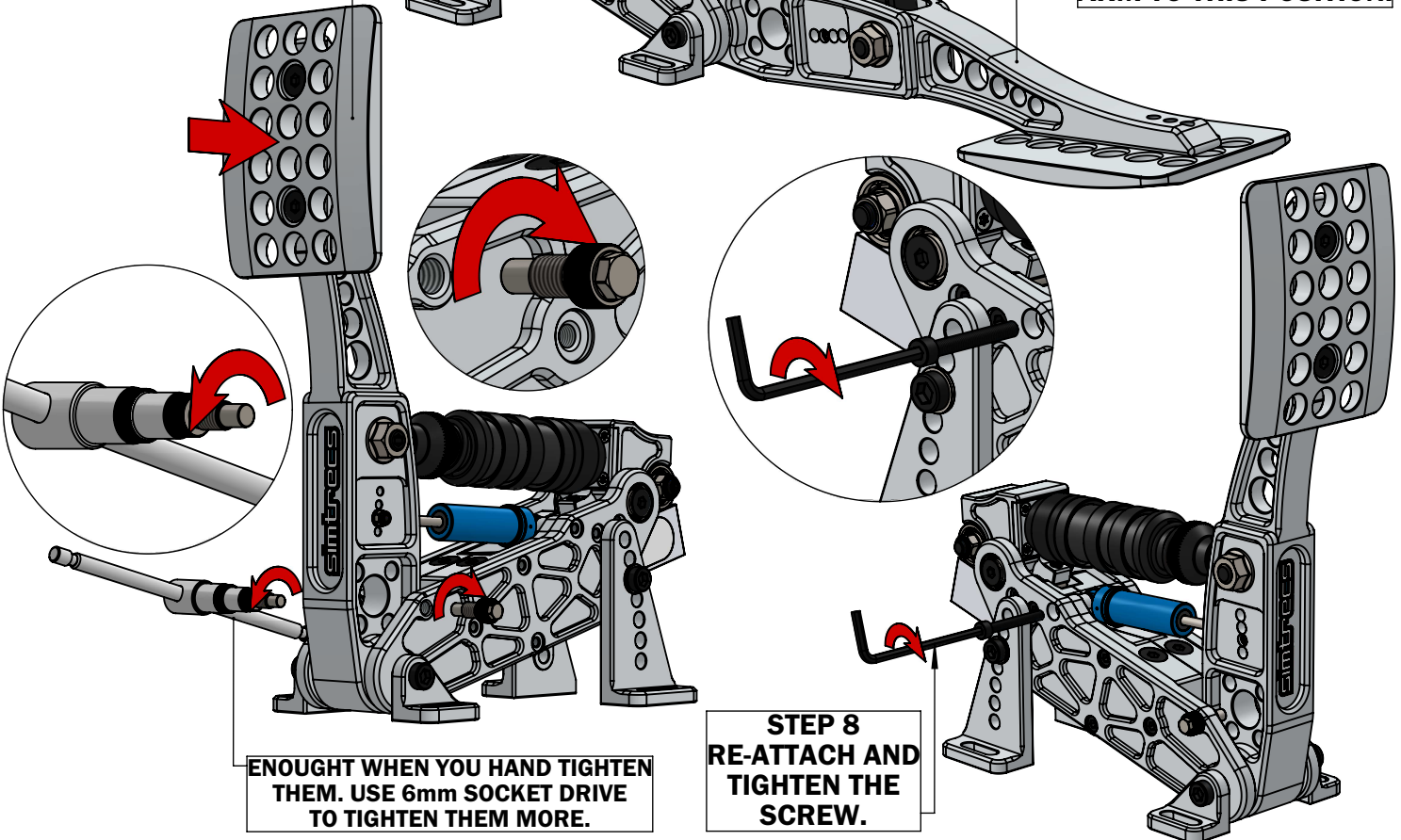
STEP 4
REMOVE THE ELASTOMER STACK.

YOU CAN KEEP THE SPRING ON IT'S PLACE.



STEP 7
ADD TWO SCREWS WHILE PRESSING THE PEDAL A LITTLE BIT BACKWARDS.

STEP 6
FOLD BACK THE PEDAL ARM TO THIS POSITION.



ENOUGH WHEN YOU HAND TIGHTEN THEM. USE 6mm SOCKET DRIVE TO TIGHTEN THEM MORE.

STEP 8
RE-ATTACH AND TIGHTEN THE SCREW.