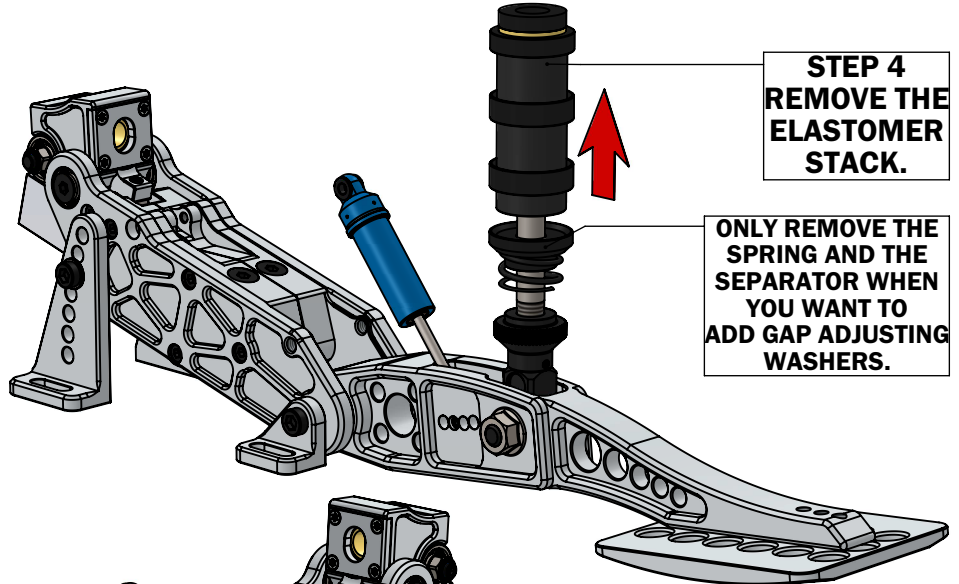


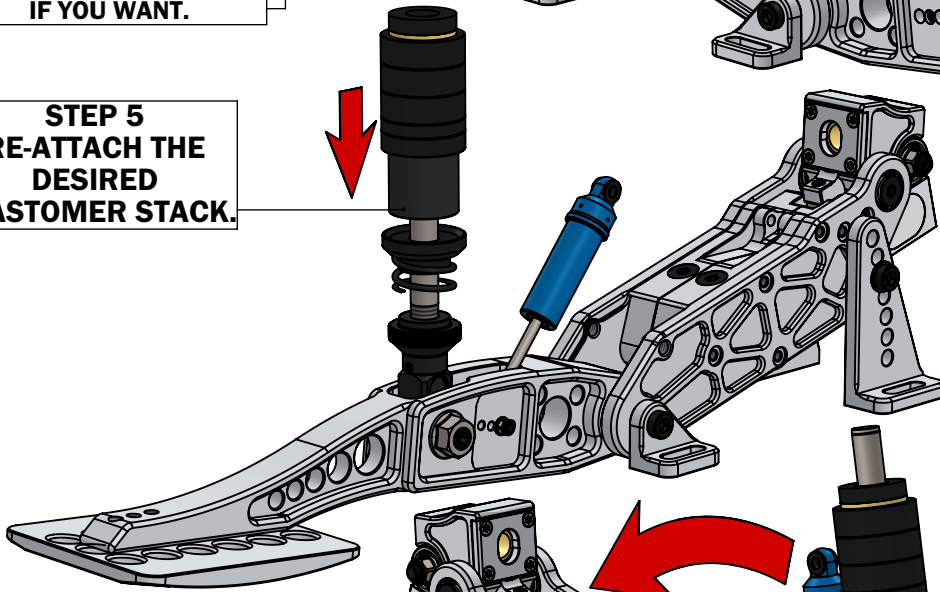
PLACE OR REMOVE GAP ADJUSTING WASHER HERE IF YOU WANT.



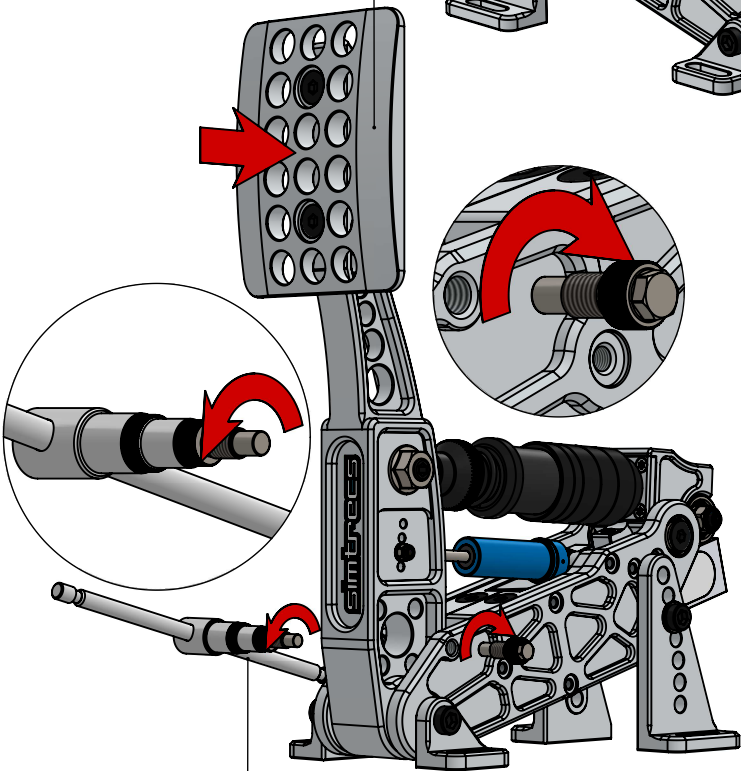
STEP 4
REMOVE THE ELASTOMER STACK.

ONLY REMOVE THE SPRING AND THE SEPARATOR WHEN YOU WANT TO ADD GAP ADJUSTING WASHERS.

STEP 5
RE-ATTACH THE DESIRED ELASTOMER STACK.

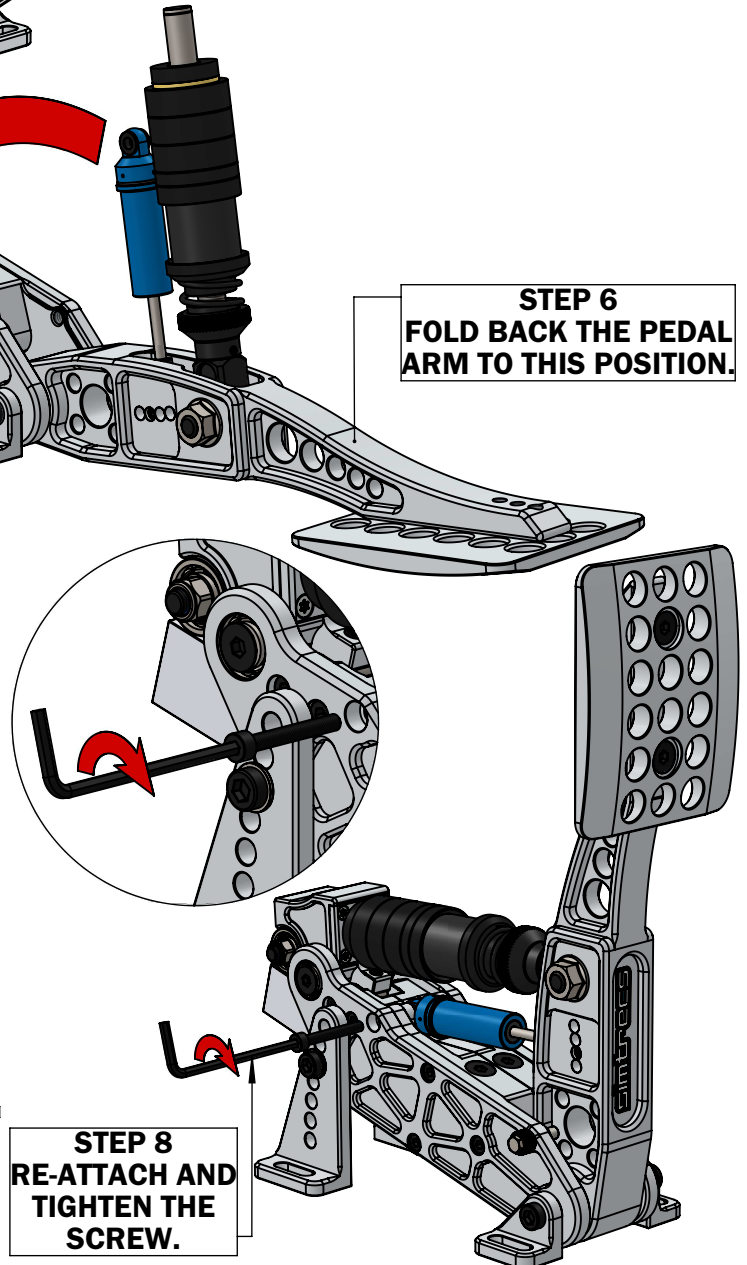


STEP 7
ADD TWO SCREWS WHILE PRESSING THE PEDAL A LITTLE BIT BACKWARDS.



ENOUGH WHEN YOU HAND TIGHTEN THEM. USE 6mm SOCKET DRIVE TO TIGHTEN THEM MORE.

STEP 6
FOLD BACK THE PEDAL ARM TO THIS POSITION.



STEP 8
RE-ATTACH AND TIGHTEN THE SCREW.