

SmartDrive is our unique configuration software for the ProPedal. SmartDrive software can be downloaded from our website's (www.simtrecs.com) support section. There is always the latest version available. To make ProPedal future proof it has an update able firmware. The latest version can be downloaded from our website's support section. SmartDrive allows to calibrate pedals, adjust dead zone and brake force, limit the brake output, choose from four unique pedal curve (linear, exponential, one point, multi point). SmartDrive allows to create profiles, which could be stored on a connected PC. Every adjustment is stored on the pedal controller, so after all adjustment done, the pedal can connect to an other simulator and it works exactly the same way like before.

CURRENTLY SELECTED PEDAL. MULTIPLE PEDAL COULD BE PARALELL CONNECTED TO THE SAME PC.

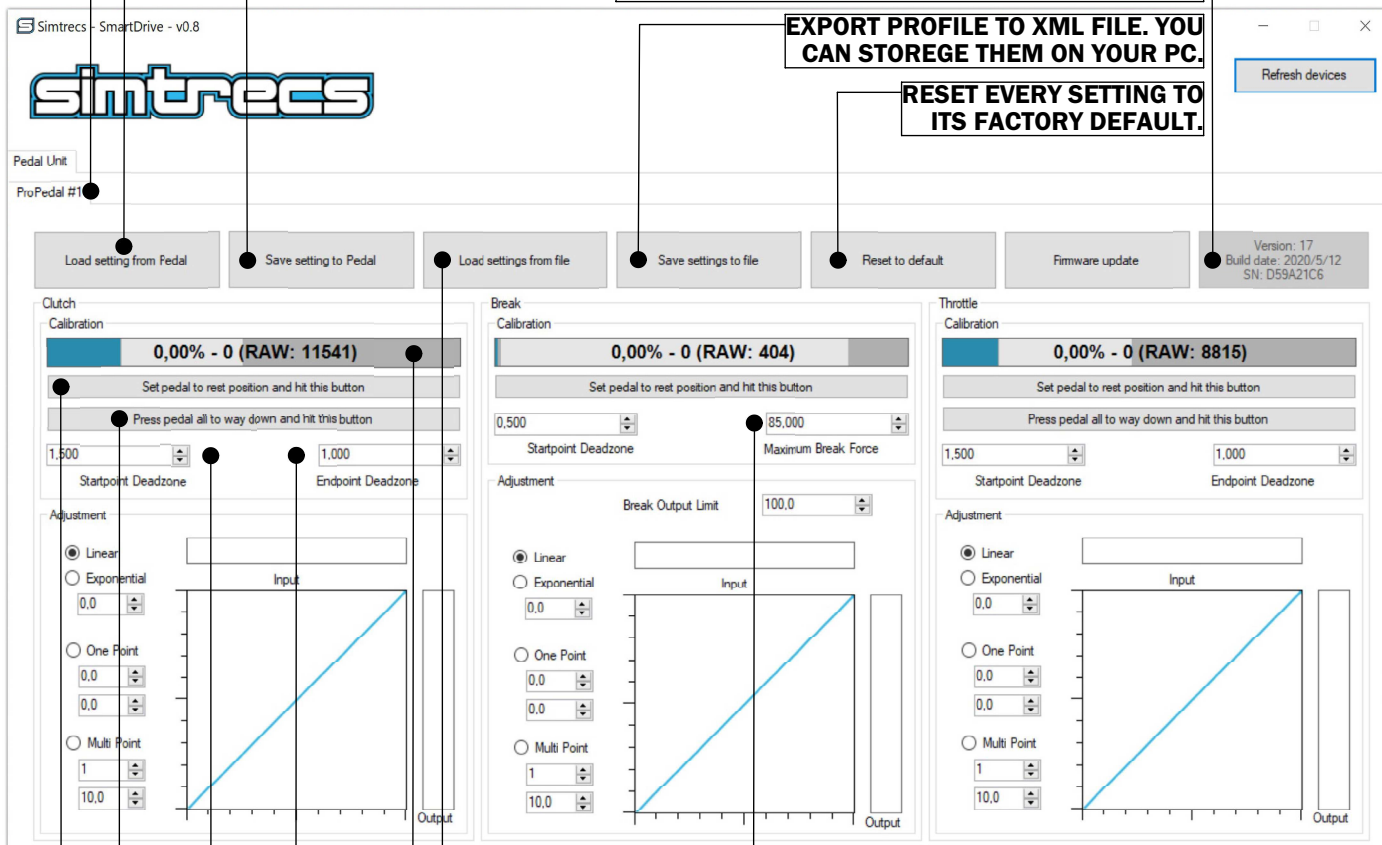
READ DATA OUT FROM PROPEDAL.

DEVICE AND SOFTWARE INFO.

SAVES SETTINGS, AFTER CHANGING ANY SETTING, IT MUST BE SAVED TO THE PEDAL CONTROLLER.

EXPORT PROFILE TO XML FILE. YOU CAN STORAGE THEM ON YOUR PC.

RESET EVERY SETTING TO ITS FACTORY DEFAULT.



THE BRAKE FORCE CAN BE ADJUSTED BY THIS VALUE AND WITH A POTENTIOMETER ON THE THROTTLE PEDAL. RECOMMENDED TO USE THE POTENTIOMETER FOR MAIN BRAKE FORCE ADJUSTMENT AND USE THIS SETTING ONLY TO COMPENSATE THE DIFFERENCE BETWEEN VARIOUS CARS AND VARIOUS SIM TITLES.

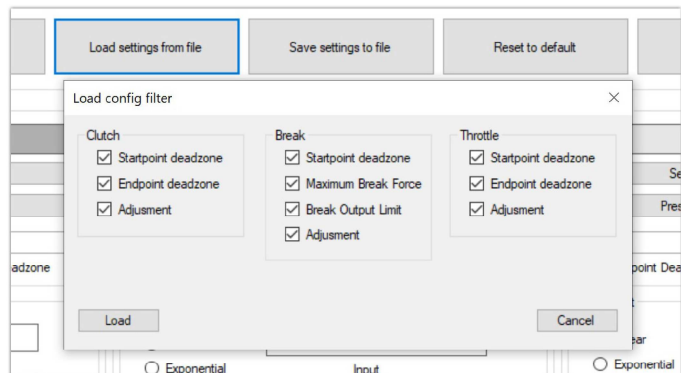
*** THE PROFILE NOW ONLY LOADED TO SMARTDRIVE. IT MUST BE SAVED TO APPLY IT.**

LOAD* AN XML PROFILE FILE INTO SMARTDRIVE*. BY CLICKING THE BUTTON YOU WILL GET AN POP-UP WINDOW WHERE YOU CAN SELECT THE SETTINGS TO LOAD.

PEDAL POSITION RAW INDICATOR. THE ACTIVE ZONE IS LIGHT GRAY. AFTER CALIBRATION THE INACTIVE/CUTTED ZONE BECOMES DARK GRAY.

ADDS EXTRA UPPER INACTIVE ZONE. ADJUSTMENT VALUE IS PERCENTAGE.

IT ADDS EXTRA LOWER INACTIVE ZONE. ADJUSTMENT IS IN PERCENTAGE.



TO CALIBRATE THE PEDAL END POINT, PUSH THE PEDAL ALL THE WAY DOWN AND HIT THIS BUTTON.

TO CALIBRATE THE PEDAL START POINT, LET THE PEDAL UNLOADED AND HIT THIS BUTTON.

The Simtrecs ProPedal uses 16 bit controller. Regardless of settings in SmartDrive, each axis range is between 0 and 65535. Most of the simulators use these values and therefore additional calibration not needed. E.g. iRacing is an exception, because it uses its own RAW based calibration method. So driver must take care to press the pedal until it shows 65535 as a value. When You calibrate your pedal never use the option "Brake output limit" on SmartDrive. Recommended to use completely linear pedal curves in the simulator software, like "Brake force factor to 0" in iRacing, or "100% sensitivity" in rFactor 2... specific thoes settings in SmartDrive instead.